



THE WHITE ROSE GRID e-Science Centre of Excellence

White Rose Grid Outreach Activities From e-Science to g-Business

“The White Rose elected, as a part of these outreach activities, to hold an annual conference on the Grid”

Although Grid technology has, so far, been mainly the preserve of the scientific community, it would also appear to offer significant benefit to other communities from the public and private sectors. Evidence to support this can be derived from the myriad of reports that signal the profound impact grid technology could have on services and products (see, for example, PricewaterhouseCoopers Technology Forecast 2002 – 2004).

As part of a move to assessing the value of a regional Grid infrastructure

through provision of services to both private and public spheres, the White Rose Grid have engaged on a two-year outreach project funded by the Regional Development Agency, Yorkshire Forward.

To support this outreach project three inter-related activities have been identified:

- assessing regional interest
- developing business and charge models
- provision of a trial infrastructure to company incubators at the Science and Innovation Centres related to the three Universities



Figure 1: Grid technology can be applied in designing hulls for racing yachts.

The White Rose elected, as a part of these outreach activities, to hold an annual conference on the Grid. The conference helps to identify the potential commercial benefits of this cutting-edge technology to the business community.

Assessing Regional Interest

Three connected activities have been identified to assess regional interest:

- Grid dissemination activities through national and international conferences





“Grid technology is new. And its geographically distributed nature, its dynamic nature, and potentially wide range of available resources offer opportunities for developing new business”

- provision of demonstrators, each of which serves to both promote understanding and serve as a catalyst for identifying new issues.
- a series of co-ordinated meetings and workshops to assess their interest in Grid technology

Business Models

Grid technology is new. And its geographically distributed nature, its dynamic nature, and potentially wide range of available resources offer opportunities for developing new business and charge models. To better understand these models the White Rose Grid have initiated a number of activities, which include development of a business landscape, business development plans and identification of quality of service issues as well as fostering relations with potential users for evaluating potential models.

Trial Regional Infrastructure

To further promote use and understanding of Grid technology the White Rose University Consortium are linking the White Rose Grid to various Science Parks associated with each of the three Universities.

This will not only provide companies working in these Parks with an opportunity to use the WRG as a

platform for collaborative research and development, it will also support technology evaluation as well as enabling assessment of both business and the charge models.

To help these activities, training courses in Grid technology are being developed at Sheffield University.

Further Information

Contact:
Mr Philip Morris,
WRG Business Development Manager
email: philip.morris@cs.york.ac.uk

The project's web pages are at:
<http://www.wrgrid.org.uk>

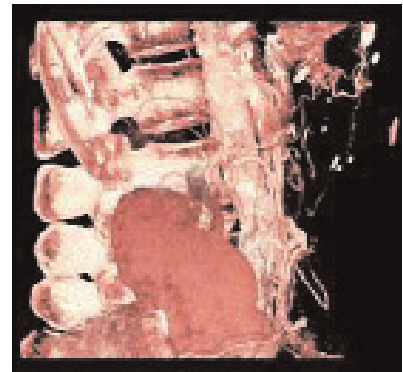


Figure 2: Grid technology will help to process large quantities of data sets from CT Scanners.

