



White Rose Grid Technology Conference March 18, 2004

Grid Technology: where next at HP

Martin Antony Walker
m.walker@hp.com



“We envision a world where distributed services execute on a utility that dynamically and securely allocates globally connected server, storage, and other resources on demand ...”

Rich Friedrich
HP Labs Palo Alto



Where are we
today?

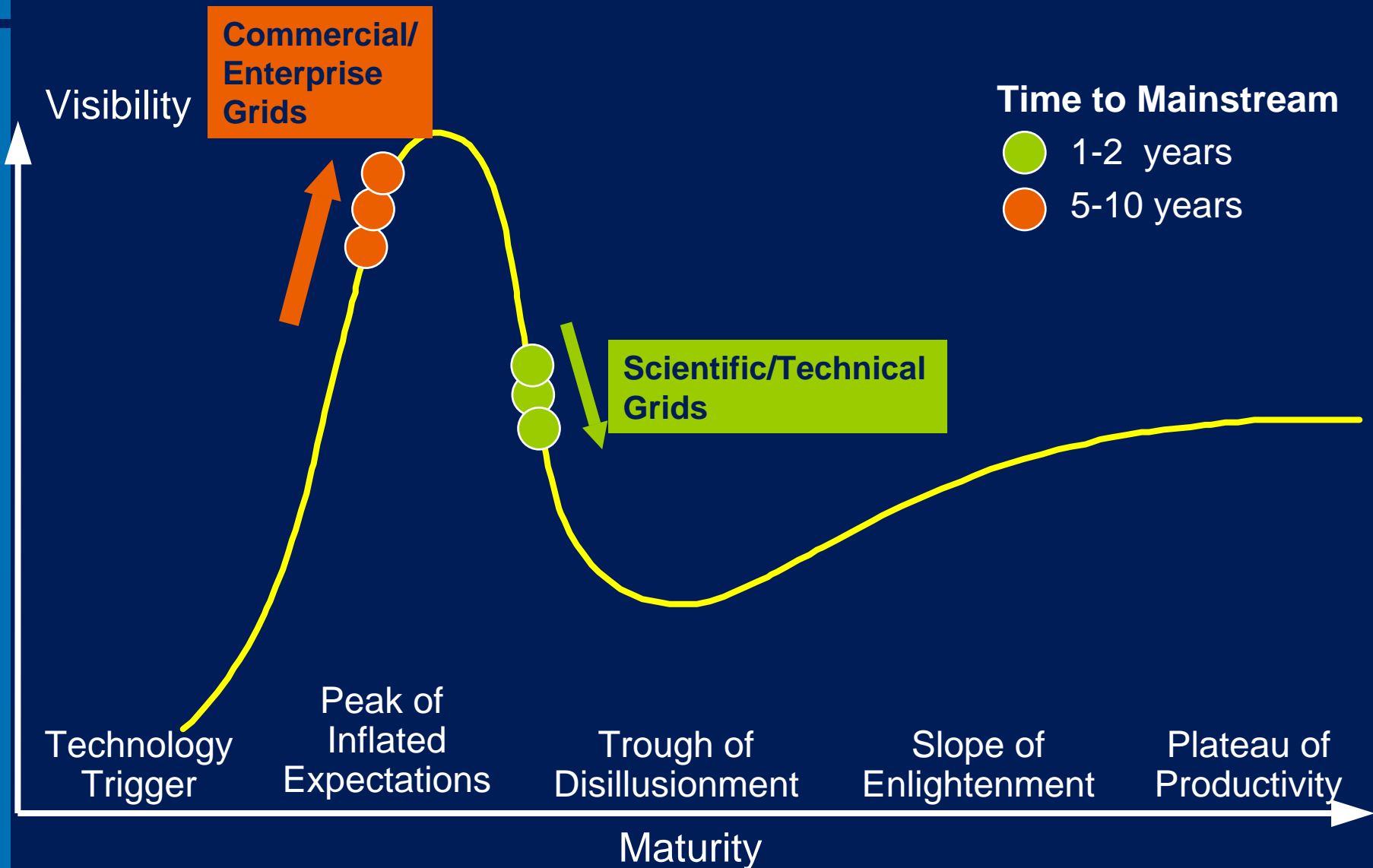


Grid Mythology

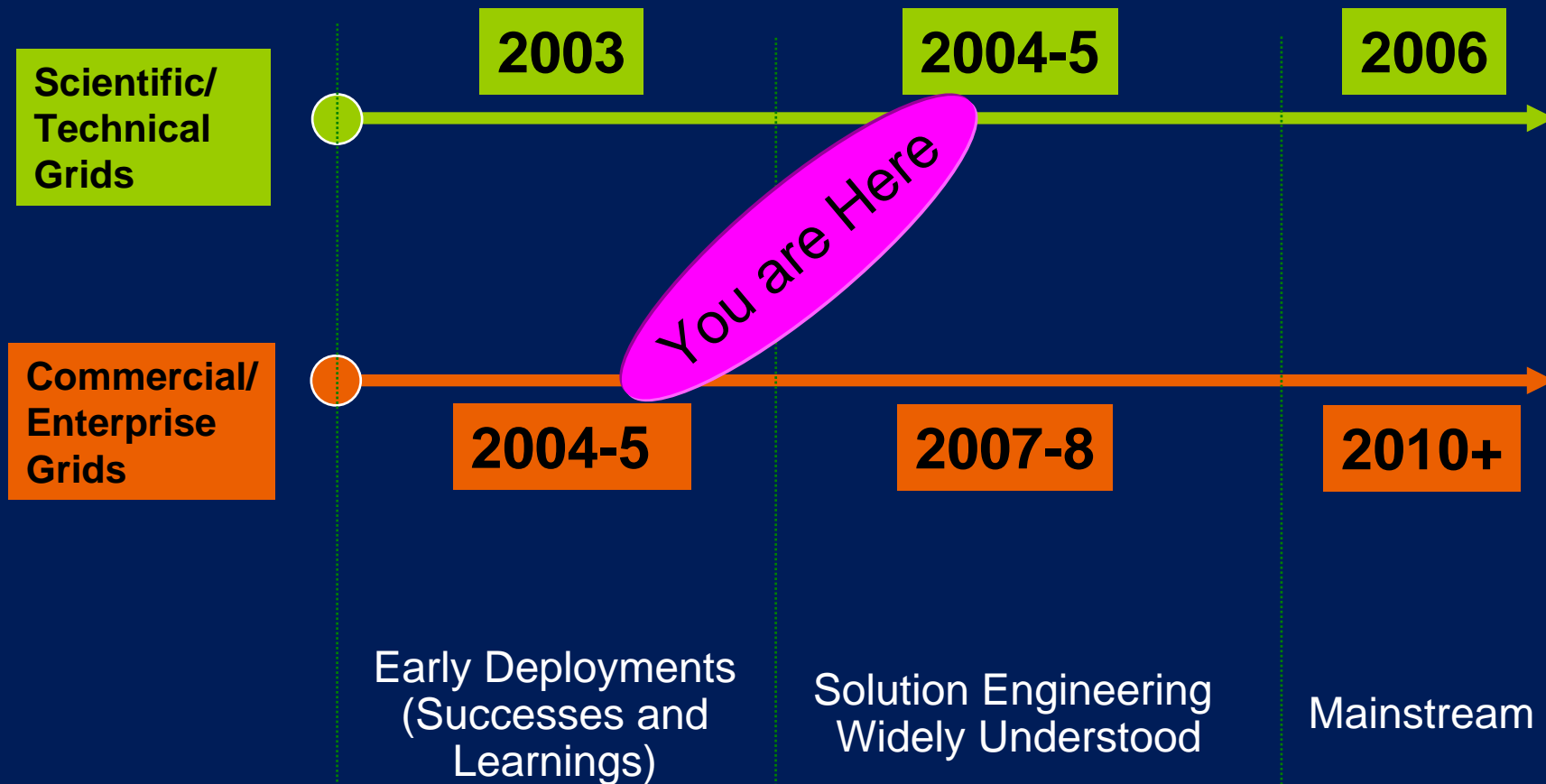


| Myth | HP Belief |
|--|--|
| Grid is for sci/tech not commercial applications | Grid has been driven by scientific computing. Just like the Internet, the Web, Linux ... |
| Grid is for loosely asynchronous applications only | This type of technical workloads is ideal for Grid today. In the future, enterprise Grids and utility services will run commercial workloads across shared resource pools |
| Grid computing will never work because of technical issues such as security | Early grid deployments tend to be within a single administrative domain. Innovation to enable multi-domain Grids is driving R&D in system vendors and a growing number of ISVs and start-ups |
| Grid computing will never work because of business issues such as licensing and “server hugging” | The drive towards the service-centric model is unstoppable. Over time software, storage, server and IT service businesses will change to adopt this model – driven by the demands of their customers |

Gartner Hype Cycle, July 2003: Two points of interest



Realistic Expectations



There is an
evolution
underway in
information
technology



Two major trends in information technology today



Virtualisation

Abstract resources from their physical realizations, and present them to clients as services

SOA

OGSA

Standardisation

Base virtualization solutions on open standards

XML, SOAP, WSDL

WS-RF

Client-Service-Resource

The Future
is Grid



HP turns the promise of the grid into reality with pioneering experience and strong collaboration with customers and partners.



Grid Tools

DESIGN

Topology Designer

Simplify design of grid and data center resources

DEPLOY

SmartFrog

Deploy grid resources automatically

PROVISION

Automatic Flexing Interface

Request and release grid and data center resources

Utility Data Center

Virtualize all data center resources

Quartermaster

Intelligent resource allocation for the data center

MANAGE

Web Services Management Framework

Standard management interface to diverse grid resources



i n v e n t