

# Cybula and Grid Technologies

Cybula Ltd.

**CYBULA**

high performance pattern recognition systems

# Aim of this presentation

- What Cybula is undertaking in Grid Technologies

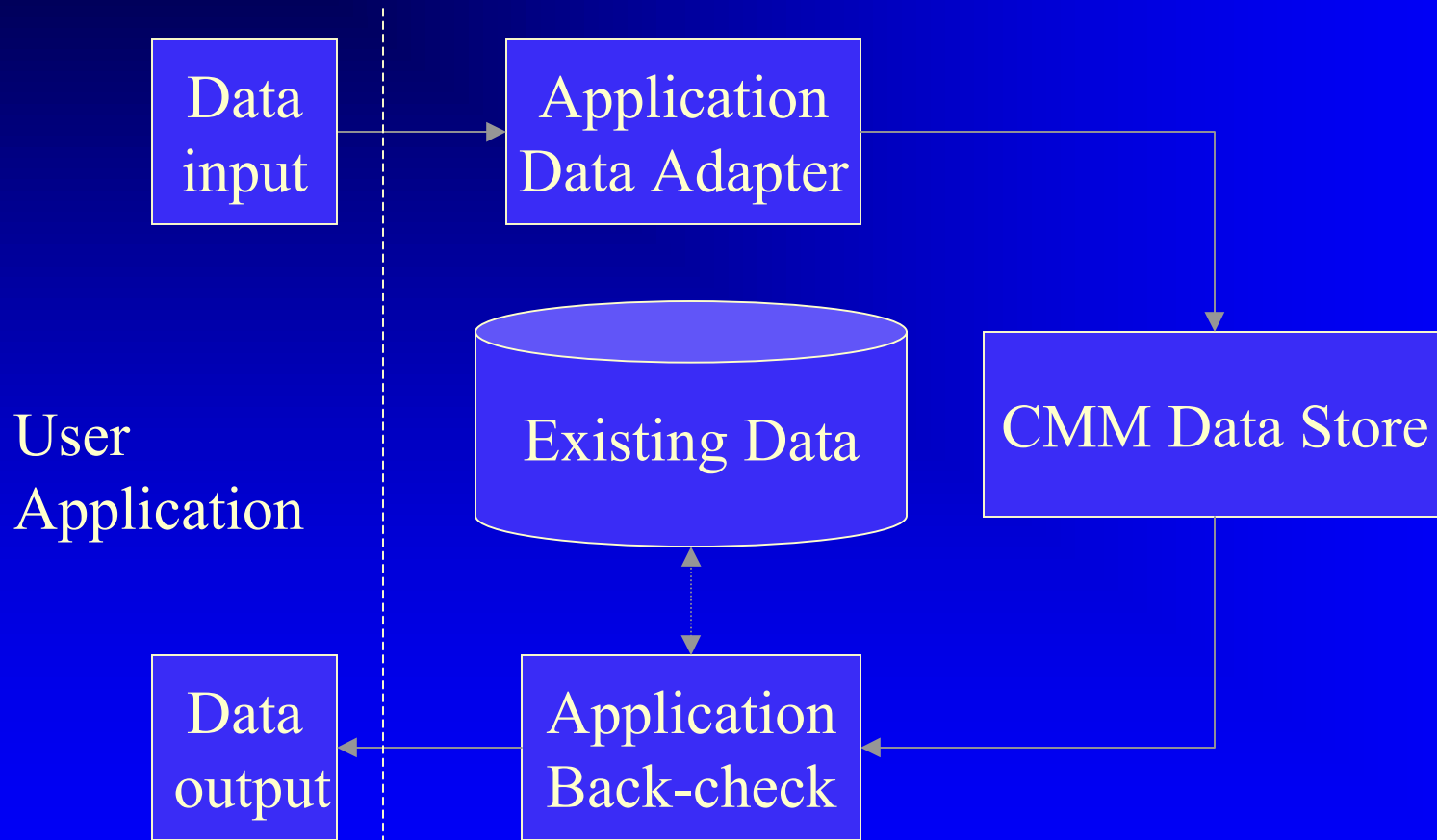
AURA

What is it?

# Basic abilities

- A scalable technology that allows users access large amounts of complex data that a DB cannot handle.

# Basic Components



AURA

AURA-G technology

# AURA-G

- Supports distributed search, across multiple CMM engines at different sites
- OGSA compliant
- Distribution of search capability dealt with by Globus.
- Developed within the DAME project

# MRI Data Analysis

## GRIDmri

A White Rose Grid Demonstrator project.

# The aims

- To demonstrate how Grid can support the clinician in the diagnosis of cancer from MRI data
- Demonstrate the power of the Grid model in healthcare
- Demonstrator available April 2003.

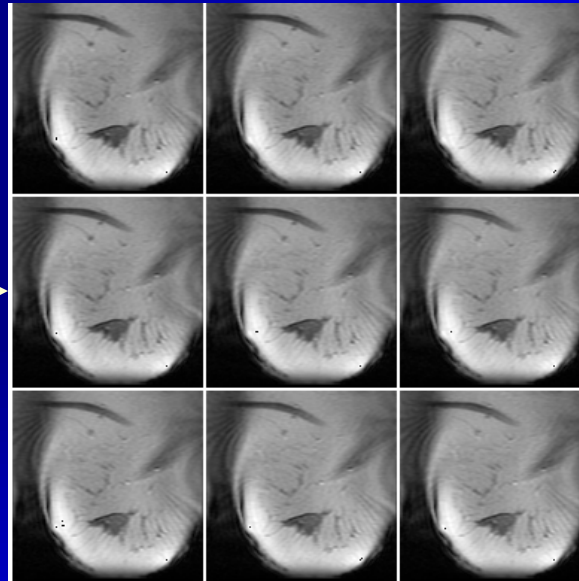
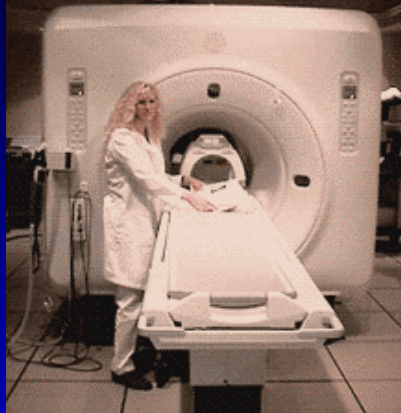
# System demonstrates

- ⑩ Management of MRI data held at disparate sites.
- ⑩ Access and analysis of MRI data by a remote user.
- ⑩ Use of grid services to access data and processing functions.
- Analysis of data using services provided by different sites.

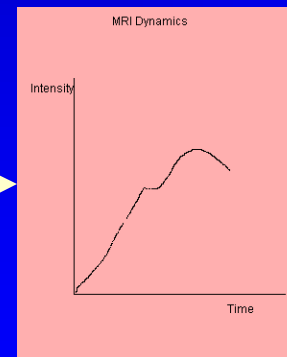
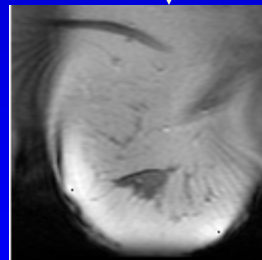
# Process

One slice through time

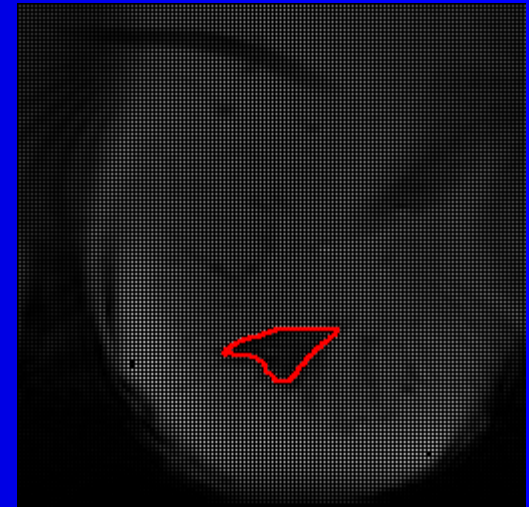
Enhanced  
Visualisation



Align images

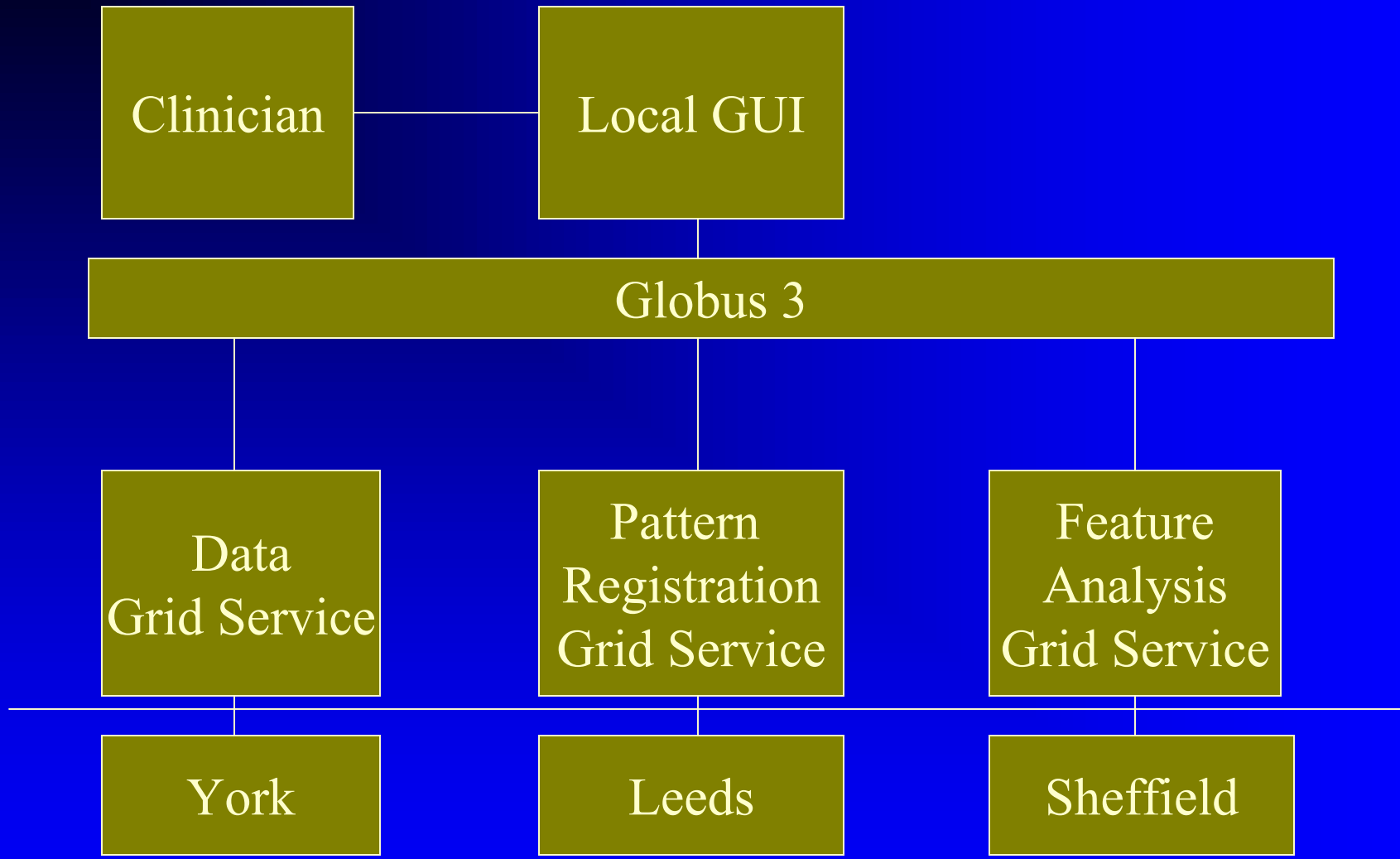


Feature Analysis



**CYBULA**

high performance pattern recognition systems



## White Rose Grid

# Contact details

Cybula Ltd.

[www.cybula.com](http://www.cybula.com)

[enquiries@cybula.com](mailto:enquiries@cybula.com)

01377 236382

**CYBULA**

high performance pattern recognition systems